

PARK RESIDENCE BEI WU - GUEST INFORMATION FOLDER

BED AND BREAKFAST INFORMATION

(1) WI-FI:

For Lake Villa: ID - Villa am See

For Hunting Lodge: ID - Villa am Tor
password - wesenberg2018

For Café Bei Wu: ID - Cafe
password - wesenberg2018

(2) TV:

Please turn on the TV and search channels with the remote control.

(3) HAIR DRYER

There is a hair dryer in the wardrobe of each suite.

(4) ROOM SERVICE SUPPLIES

For further supplies including:

Towels

Linen

Toiletries

Bottled water,

please call Holger Stephan at 01733650709

(5) SAUNA & SPA FACILITIES

For reservations, please call Holger Stephan at 01733650709

(6) SCULPTURE PARK WESENBERG

The sculpture park including Café Bei Wu is open to the public free of admission charges from 10 am to 4 pm daily, Tuesdays to Sundays, May to October.

For arranging private visits outside the park's opening hours, please call Holger Stephan at 01733650709

(7) BREAKFASTS

They are being served at Café Bei Wu from 7:30 am to 10:00 am



Map - TOWN OF WESENBERG

PLACES OF INTEREST IN WESENBERG

(I) Beach Restaurant

It is a beach side restaurant with magnificent sunset views.
For directions, please follow the way along Grosser Weisser See towards the Train Station Weisser See.

(II) Public Beach & Park

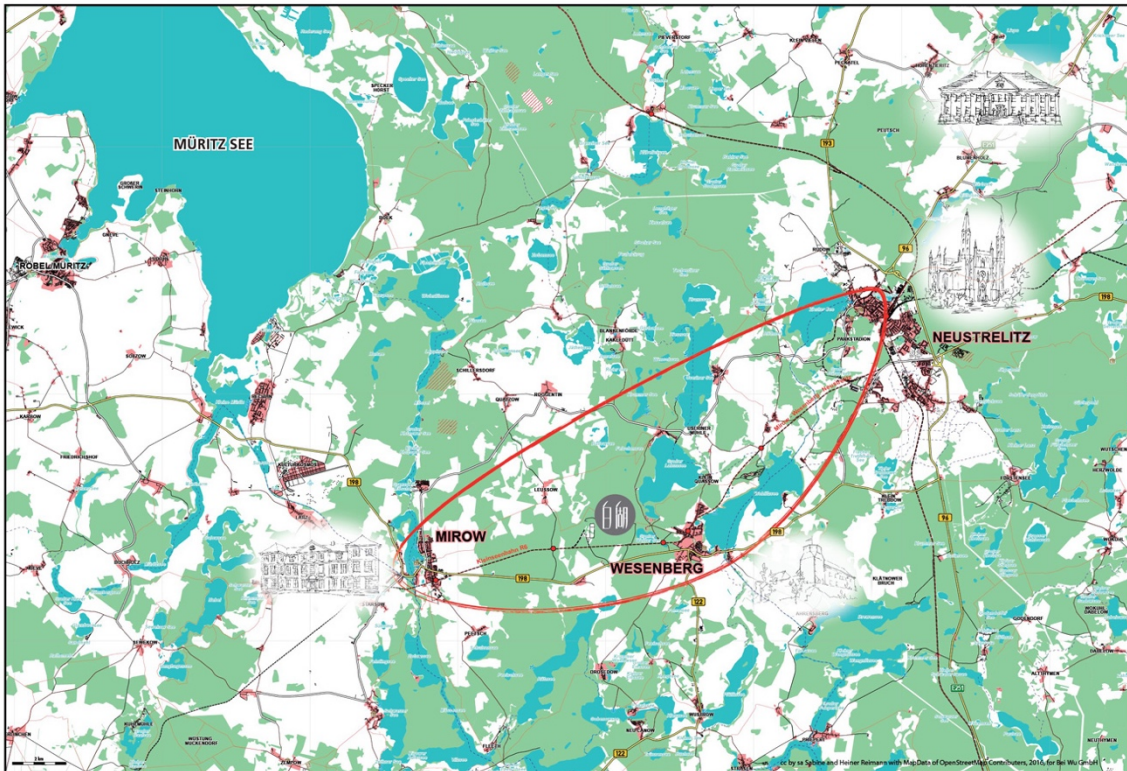
Situated between the Beach Restaurant and the Train Station Weisser See, it is perfect for swimming (lifeguards on duty), and leisure park facilities.

(III) Hafen/Port Pub

Situated between the Burg/Castle and the Hafen/Port, it is a fun Beer Garden with snack foods and a place to mingle with the locals.

(IV) Popular Tourist Sights in the Old Town Centre

- Burg/Castle & Museums
- Hafen/Port at River Havel
- St Marien Church
- Bahnhof, Country Train Station
- Landkino, Country Cinema
- Villa Pustebblume Museum and Café



Map - A VISION OF AN ARTIST COLONY TRIANGLE

PLACES OF INTEREST IN NEARBY TOWNS

NEUSTRELITZ (within 18 minutes by car)

- (a) Sculpture Gallery in the Royal Church near the former palace grounds.
- (b) The Royal Park with its Orangerie.
- (c) The Baroque Town Square with its gourmet restaurant - Fürstenhof
- (d) The Hafen/Port area with its cafés, bars & restaurants, Hotel Alter Kornspeicher
Restaurant & Coffee Shop/House, along the delightful water-front promenade.
- (e) The Kachelofenfabrik, situated close to the Town Square, is a stylish art compound with facilities for art exhibitions, cultural seminars, art cinema, restaurant & bar.
- (f) Culture Centre Mecklenburg-Strelitz, with exhibitions about the history of Mecklenburg-Strelitz

MIROW (within 15 minutes by car)

(A) Museums

There are two museums in the former palaces, showing histories of the most beloved Three Queens from the area, including Queen Sophie Charlotte who became the Queen of England when she married King George III in 1761.

(B) Hotel Alte Schlossbrauerei Restaurant

It is an atmospheric restaurant situated direct on the lake front with views of full water/yacht activities.

(C) Medieval Banquet Restaurant

Situated nearby the Hotel Restaurant, it is a charming and fun venue catering banquet dinners with medieval services and shows. (By prior reservations only)